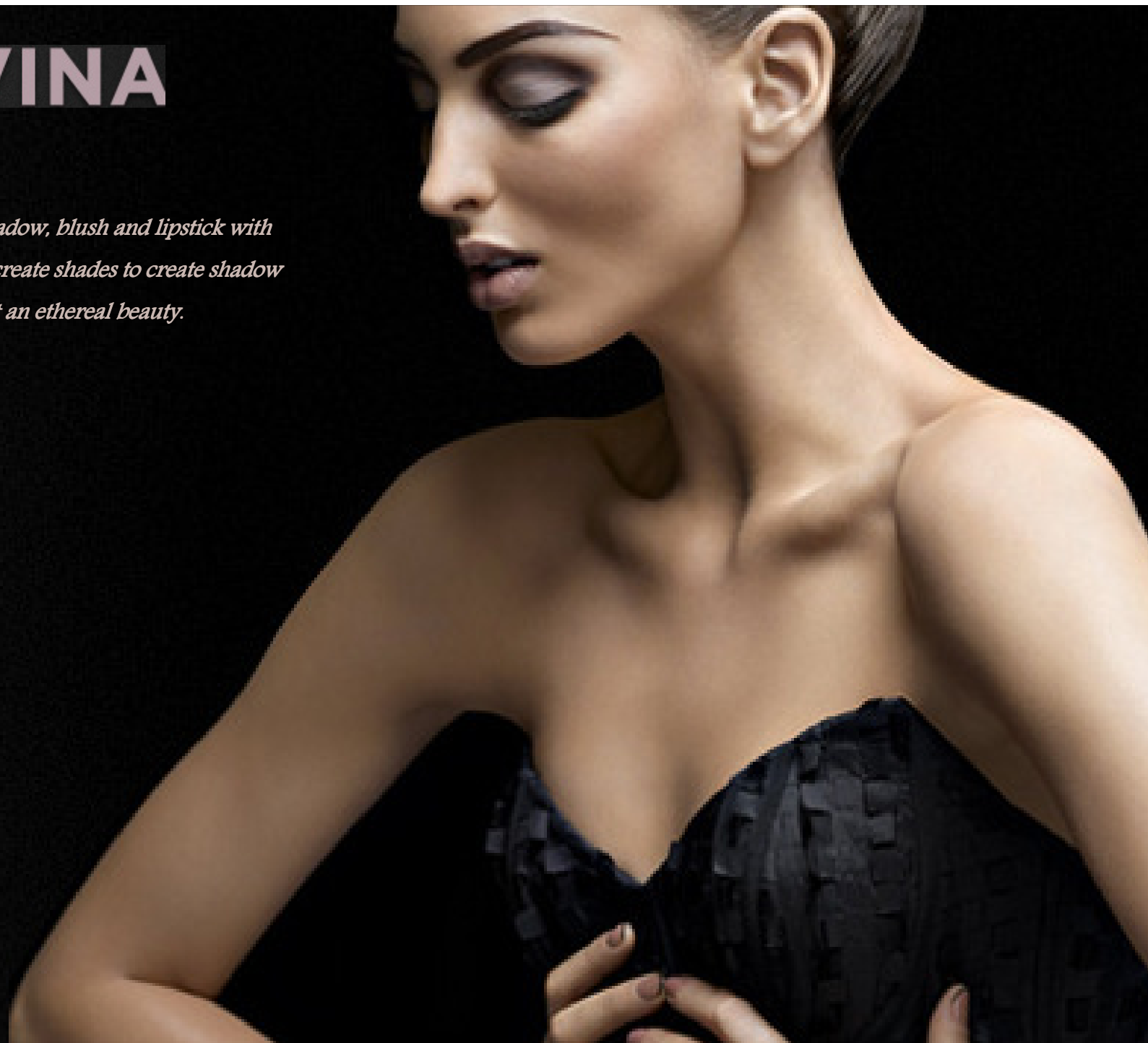


DIVINA

Nail polish, eye shadow, blush and lipstick with natural shades to create shades to create shadow games and to exalt an ethereal beauty.





This Autumn Winter Collection includes soft muted Grey and brown tones which are perfect for smokey eyes or just having natural perfect looking skin.



NAILS & LIPS



NAIL DESIGN

Three trendy shades for hands: elegant and glamorous dove grey, seductive and appealing mocha and a refined and luminous powder pink. Three shades for hands that are always in the limelight. The texture is smoothing, extremely covering and even, for a long lasting lacquered effect



GLOSS LAQUER

A gloss that delicately colours the lips, with an extremely shiny finish and mirror effect; dove-grey for glamorous and sophisticated women and nude-apricot for seductive and natural lips. It contains Vitamin E with a well known antioxidant and anti-ageing action.



ANTI AGE LIPSTICK

5 colour variants for a rich, creamy and luminous lipstick. It contains a blend of active ingredients with an anti-ageing and emollient action: hyaluronic acid spheres, a filler for micro-wrinkles and fine lines of the lips; purified extract of olive and jojoba oils with an anti-ageing and moisturizing action, ideal to prevent and eliminate chapping of the lips; oil extracted from rosehip fruit oil contains Vitamins A and C with a soothing and emollient action. The fine soft texture guarantees a precise and immediate stroke, perfect adherence and excellent coverage without feathering.

WITHOUT PARABENS - FRAGRANCE-FREE

EYES



PERFECT EYE BASE

A unifying base for eyelids in one neutral shade. Its innovative formula with great coverage melts on contact with the skin, adhering perfectly and visibly reducing micro wrinkles for an immediate lifting effect. It can be used on its own for a natural and luminous smoothing effect or as a base, applying it under any powder or fluid eye shadow to enhance its application and staying power. It is perfect in combination with Universal Fluid Eye Shadow.

WITHOUT PARABENS - WITHOUT PRESERVATIVES - FRAGRANCE-FREE



UNIVERSAL FLUID EYE SHADOW

A creamy eye shadow in a single versatile colour. The practical applicator allows rapid and perfect application of the product which can then also be further blended in with the fingertips. Perfect adherence and fast drying ensure its staying power. The natural and sophisticated final result is guaranteed by the perfect combination with the Perfect Eye Base .

WITHOUT PARABENS - WITHOUT PRESERVATIVES - FRAGRANCE-FREE



COLLECTION EYE PENCIL

In dove grey only to emphasize the eye contour and give sharpness and depth. The medium-soft consistency allows immediate release of colour and great staying power. Its formula allows application both inside and outside the eye.



DUAL COLOUR EYE PENCIL & KAJAL

A two-in-one product, an eye pencil and khol. In two shades: the darker one, applied inside the eye gives a magnetic and intriguing gaze whilst applied to the exterior it emphasizes the eye contour; the lighter shade applied inside makes the eyes larger and more languid, whilst blended on the upper lash line it makes the eyes look larger. Its texture ensures immediate application and great staying power

EYES & CHEEKS

CORRECTIVE EYE SHADOW

A mono eye shadow in dove grey only, particularly recommended for corrective make-up or for sophisticated and natural make-up.



1. **SUNKEN EYES:** apply the eye shadow to the orbital bone, blending it in towards the superciliary arch, but without going as far as the eyebrows, emphasizing in the upper part the lash line with a fine line of dove grey eye pencil no. 41.
2. **DEEP-SET EYES:** to correct deep-set eyes, apply the eye shadow only as far as the orbital bone, blending it towards the nose and the superciliary arch. Emphasize the gaze by applying the dove grey eye pencil no. 41, in the lower external part.
3. **BULGING EYES:** to minimize bulging eyes, the eye shadow should be applied only all over the movable eyelid, which tends to lengthen the eye. Complete the correction applying the dove grey eye pencil no. 41 inside the eye.



ESSENTIAL DUO EYESHADOW

2 colour variants of an eye shadow duo for an intense effect and a deep gaze. The texture is smooth and easy to apply for perfect adherence and long staying power. A more intense colour paired with a lighter, satiny shade for modern and sensual make-up



SCULPTURE BLUSHER

Two different shades for the face, one a light pink, the other more intense and defined. Both allow personalizing the shade most suitable for the individual complexion.

The airy and silky texture guarantees an opaque, covering and even finish that gives the face a smooth and flawless effect. It contains a blend of active ingredients that ensure extreme wear and Vitamin E with antioxidant properties.

DIVINA

*Diego dalla Palma is exclusively distributed by
Chemimart Ltd Tel. 21492212*

